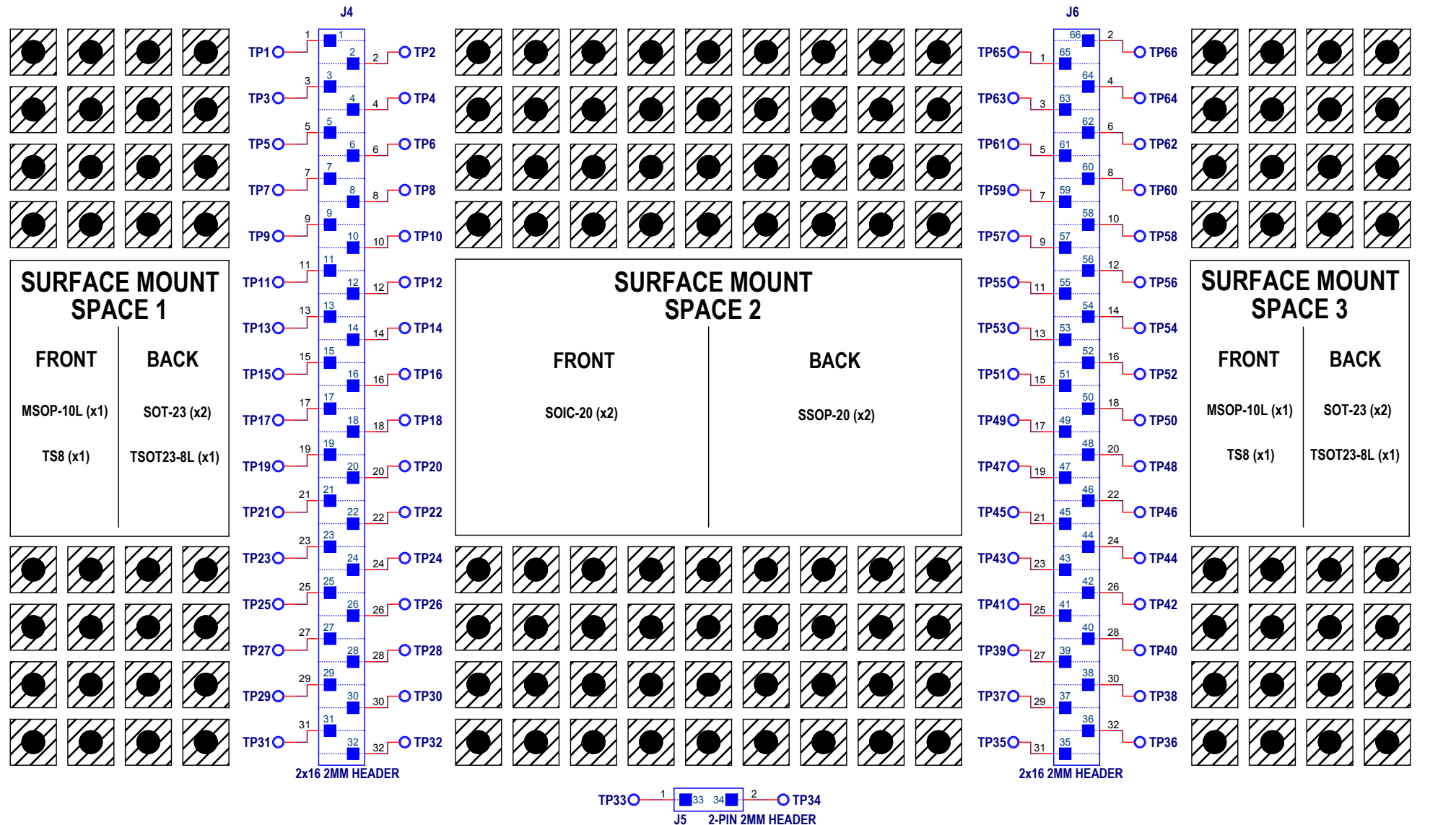

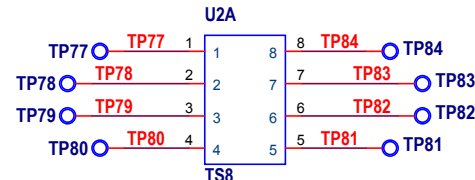
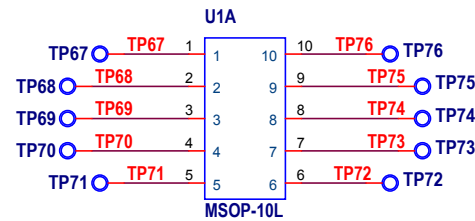


BOARD DIMENSIONS: 2.5" x 1.75"

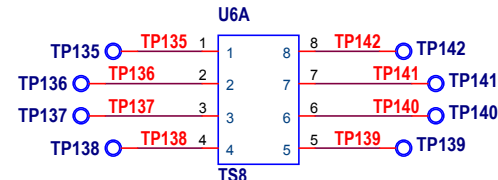
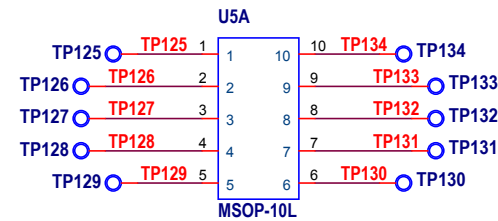
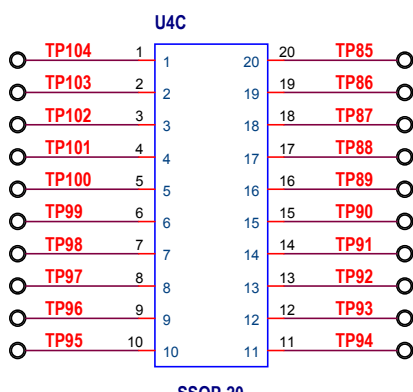
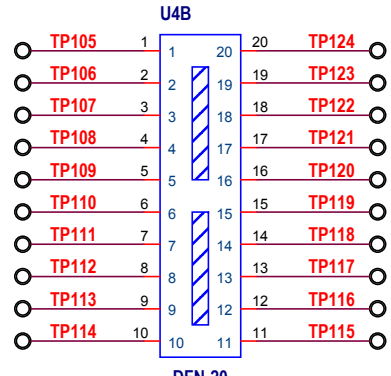
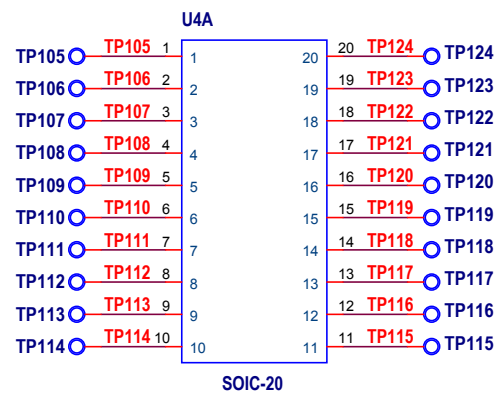
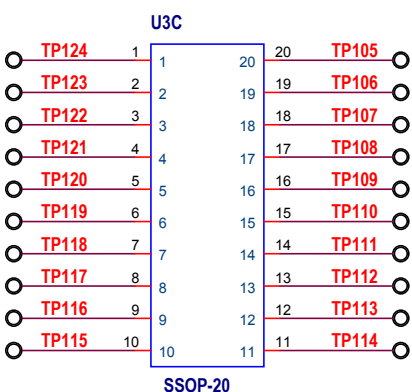
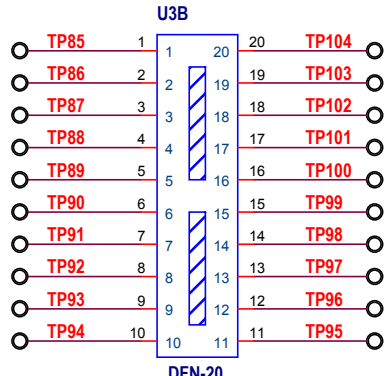
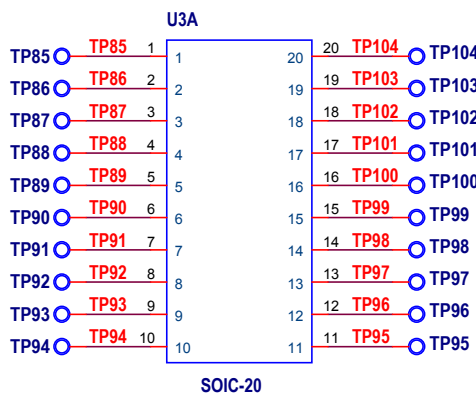
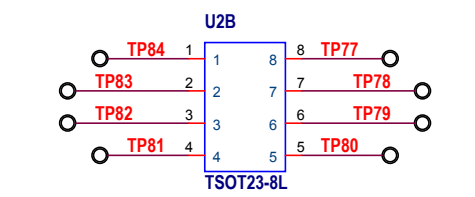
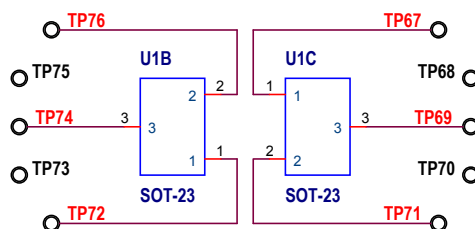
REVISION HISTORY				
ECO	REV	DESCRIPTION	APPROVED	DATE
-	1	PRODUCTION	ZP	12 - 8 - 15



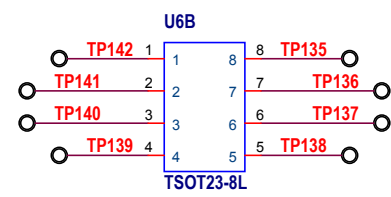
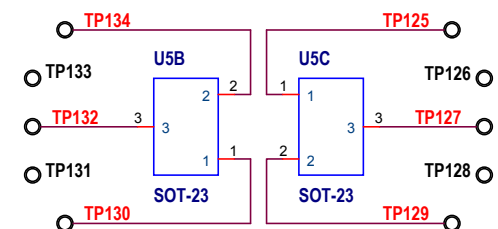
CUSTOMER NOTICE LINEAR TECHNOLOGY HAS MADE A BEST EFFORT TO DESIGN A CIRCUIT THAT MEETS CUSTOMER-SUPPLIED SPECIFICATIONS; HOWEVER, IT REMAINS THE CUSTOMER'S RESPONSIBILITY TO VERIFY PROPER AND RELIABLE OPERATION IN THE ACTUAL APPLICATION. COMPONENT SUBSTITUTION AND PRINTED CIRCUIT BOARD LAYOUT MAY SIGNIFICANTLY AFFECT CIRCUIT PERFORMANCE OR RELIABILITY. CONTACT LINEAR TECHNOLOGY APPLICATIONS ENGINEERING FOR ASSISTANCE.		APPROVALS		 LINEAR TECHNOLOGY		1630 McCarthy Blvd. Milpitas, CA 95035 Phone: (408)432-1900 www.linear.com Fax: (408)434-0507 LTC Confidential-For Customer Use Only			
PCB DES. NC		APP ENG. ZP				TITLE: SCHEMATIC DC2510A: SHIELD BOARD FOR USE WITH DC2321A DUST DEMOBOARD			
				SIZE N/A				IC NO. DEMO CIRCUIT 2510A	
THIS CIRCUIT IS PROPRIETARY TO LINEAR TECHNOLOGY AND SUPPLIED FOR USE WITH LINEAR TECHNOLOGY PARTS.		SCALE = NONE		DATE: 12 - 8 - 15				SHEET 1 OF 1	



FRONT
BACK



FRONT
BACK

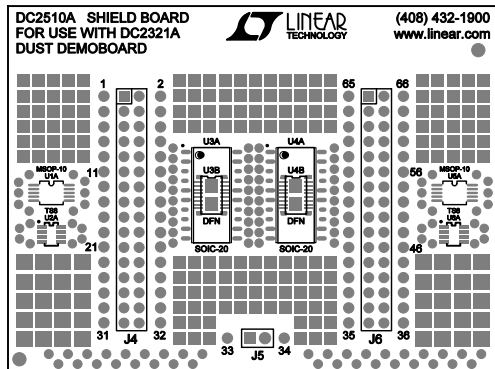


Linear Technology Corporation
SHIELD BOARD
(FOR USE W/ DC2321A)

BILL OF MATERIALS
DEMO BD. #2510A-1
QTY- 250
1/12/2016

<i>Item</i>	<i>Qty</i>	<i>Reference</i>	<i>Part Description</i>	<i>Manufacturer / Part #</i>	<i>Kit Qty</i>
				NUMBER OF BOARDS =	250
1	2	J4, J6	2x16, 2MM PITCH, VERTICAL STACKABLE SOCKET	SAMTEC, ESQT-116-02-GF-D-310	500
2	1	J5	2 PIN, 2MM PITCH, VERTICAL STACKABLE SOCKET	SAMTEC, ESQT-102-02-GF-S-310	250
3	1	---	FAB, PRINTED CIRCUIT BOARD	DEMO CIRCUIT 2510A-1	250


<i>Item</i>	<i>Qty</i>	<i>Reference</i>	<i>Part Description</i>	<i>Manufacturer / Part #</i>
REQUIRED CIRCUIT COMPONENTS				
1	2	J4, J6	2x16, 2MM PITCH, VERTICAL STACKABLE SOCKET	SAMTEC, ESQT-116-02-GF-D-310
2	1	J5	2 PIN, 2MM PITCH, VERTICAL STACKABLE SOCKET	SAMTEC, ESQT-102-02-GF-S-310
3	1	---	FAB, PRINTED CIRCUIT BOARD	DEMO CIRCUIT 2510A-1

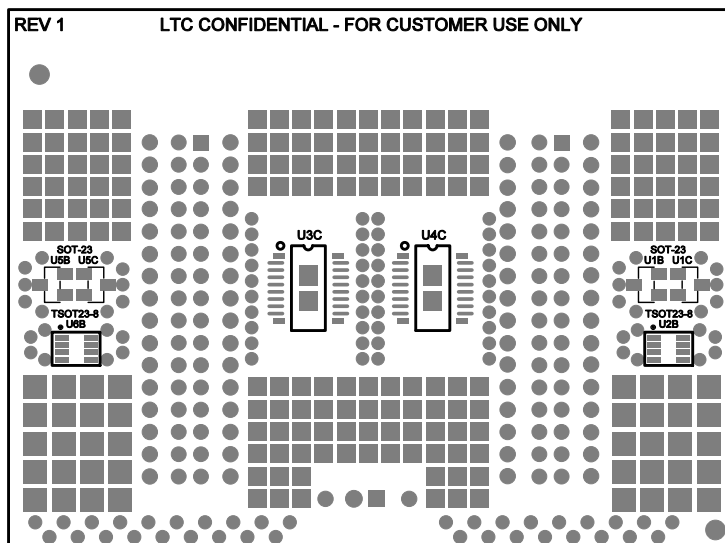



REVISION HISTORY				
ECO	REV	DESCRIPTION	APPR	DATE
-	1	PRODUCTION	ZP	12-15-15

NOTES: UNLESS OTHERWISE SPECIFIED

1. WORKMANSHIP SHALL BE IN ACCORDANCE WITH IPC-A-610.
2. ASSEMBLY REFLOW PROFILE SHALL BE IN ACCORDANCE WITH J-STD-020 WITH MAXIMUM SOLDER TEMPERATURE OF 250 DEGREES CELSIUS.
3. PARTS TO OMIT WILL BE SPECIFIED ON THE BILL OF MATERIALS. LOCATIONS OF OMITTED PARTS SHALL BE FREE OF SOLDER. MASK THE SOLDER STENCIL WHERE SMT PARTS ARE OMITTED.
4. DEPANELIZE BOARDS AFTER ASSEMBLY AND ROUTE-OUT THE BREAKOUT TABS ON FOUR SIDES OF THE BOARD EDGE.

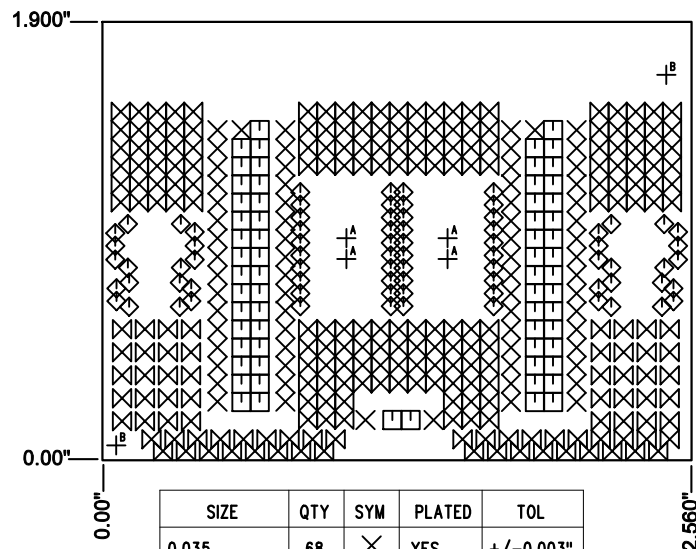
APPROVALS		 LINEAR TECHNOLOGY		1630 MCCARTHY BLVD MILPITAS, CA 95035 PH: (408)432-1900 www.Linear.com LTC CONFIDENTIAL- FOR CUSTOMER USE ONLY	
PCB DES.	NC				
APP ENG.	ZP	TITLE: TOP ASSEMBLY DRAWING: SHIELD BOARD FOR USE WITH DC2321A DUST DEMOBOARD			
		SIZE N/A	IC NO. DEMO CIRCUIT 2510A	REV. 1	
SCALE = NONE		FILENAME: DC2510A-1.PCB		SHT 1 of 2	



APPROVALS		 LINEAR TECHNOLOGY 1630 MCCARTHY BLVD MILPITAS, CA 95035 PH: (408)432-1900 www.linear.com LTC CONFIDENTIAL- FOR CUSTOMER USE ONLY	
PCB DES.	NC		
APP ENG.	ZP	TITLE: BOTTOM ASSEMBLY DRAWING GLEENERGY DUST EH APPLICATION DEMOBOARD WITH E-INK DISPLAY	
		SIZE N/A	IC NO. DEMO CIRCUIT 2510A
SCALE = NONE		FILENAME: DC2510A-1.PCB	REV 1
		SHT 2 of 2	

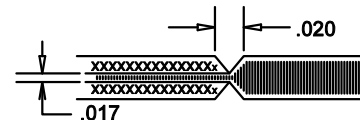
REVISION HISTORY				
ECO	REV	DESCRIPTION	APP. ENG.	DATE
-	1	PRODUCTION	ZP	12-15-15

NOTES: UNLESS OTHERWISE SPECIFIED



SIZE	QTY	SYM	PLATED	TOL
0.035	68	✕	YES	+/-0.003"
0.03346	64	□	YES	+/-0.003"
0.03	76	◇	YES	+/-0.003"
0.03937	236	⊠	YES	+/-0.003"
0.05906	4	⊕ ^A	YES	+/-0.003"
0.07	2	⊕ ^B	NO	+/-0.003"

- FAB PER IPC-A-600, CLASS 2.
- MATERIAL: -EPOXY FIBERGLASS, NEMA GRADE FR-4
-FINISHED THICKNESS TO BE 0.062" +/- .005"
-TOTAL OF 2 LAYERS WITH 1 OZ. CU ON THE OUTER LAYERS
-FLAMMABILITY RATING: 94 V-O MINIMUM.
- SIZE: CUT TO DIMENSIONS AND TOLERANCES SHOWN.
0.00" ARE PRIMARY DATUMS.
- DRILLING: -DRILL HOLES PER SCHEDULE. PLATE THROUGH HOLES WITH COPPER, 0.001" THICK MIN.
-ALL HOLE SIZES ARE SPECIFIED AFTER PLATING.
-HOLE LOCATION TOLERANCES ARE +/-0.003" IN RELATION TO CENTER
- FINISH: -SMOBC USING LPI BOTH SIDES, COLOR GREEN, TENT ALL VIAS.
-GOLD IMMERSION BOTH SIDES.
(LEAD FREE SOLDER CAN BE USED FOR PROTOTYPE)
-FOR SILKSCREEN: BOTH SIDES USE WHITE NON-CONDUCTIVE INK.
- DO NOT ALTER ARTWORK e.g. TO ADD LOGO OR DATE CODE.
PAD SIZE CAN BE MODIFIED TO MEET END FINISH.
- PCBS ARE TO BE RoHS COMPLIANT.
- SCORING FOR PANELIZED PCB:

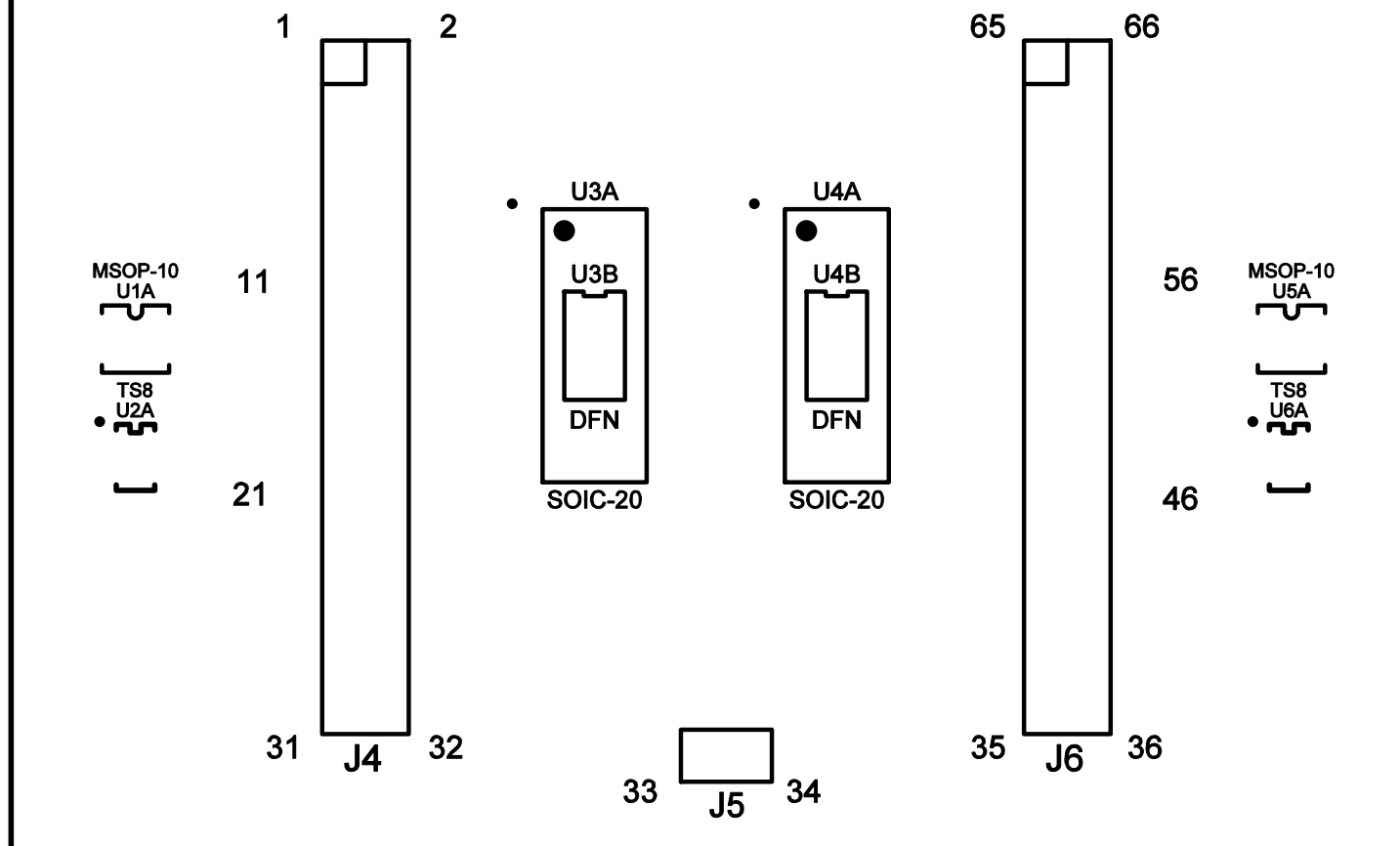


UNLESS OTHERWISE SPECIFIED DIMENSIONS ARE IN INCHES TOLERANCES: 0.XX" = ± 0.01 " 0.XXX" = ± 0.005 " INTERPRET DIM AND TOL PER ASME Y14.5M-1994 THIRD ANGLE PROJECTION 		APPROVALS		1630 MCCARTHY BLVD MILPITAS, CA 95035 PH: (408)432-1900 www.linear.com LTC CONFIDENTIAL- FOR CUSTOMER USE ONLY	
		PCB DES.	NC		
		APP ENG.	ZP	TITLE: FABRICATION DRAWING SHIELD BOARD FOR USE WITH DC2321A DUST DEMOBOARD	
				SIZE	IC NO.
				N/A	DEMO CIRCUIT 2510A
					REV 1
		SCALE = NONE		FILENAME: DC2510A-1.PCB	
				SHT 1 OF 1	

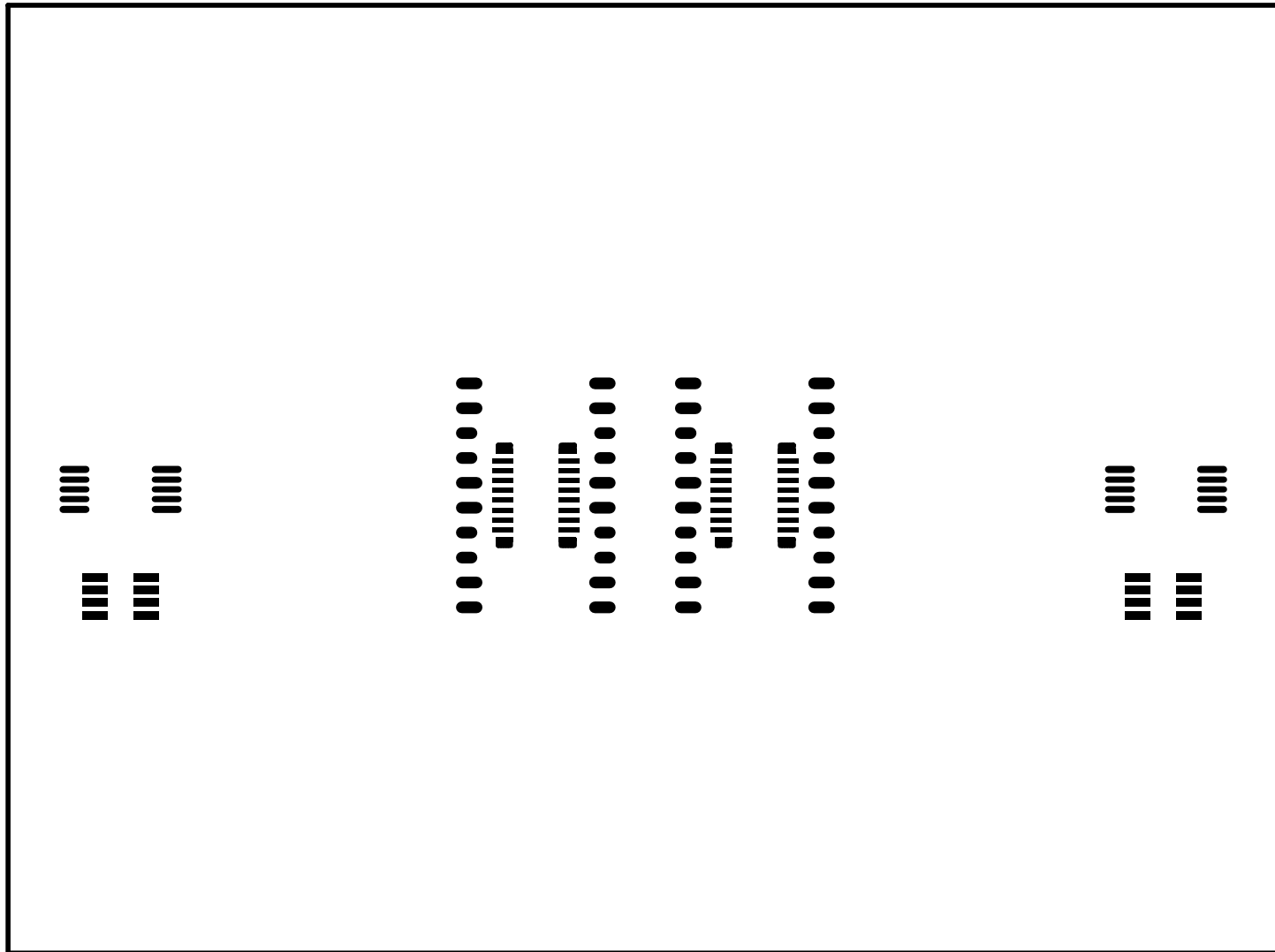
DC2510A SHIELD BOARD
FOR USE WITH DC2321A
DUST DEMOBOARD



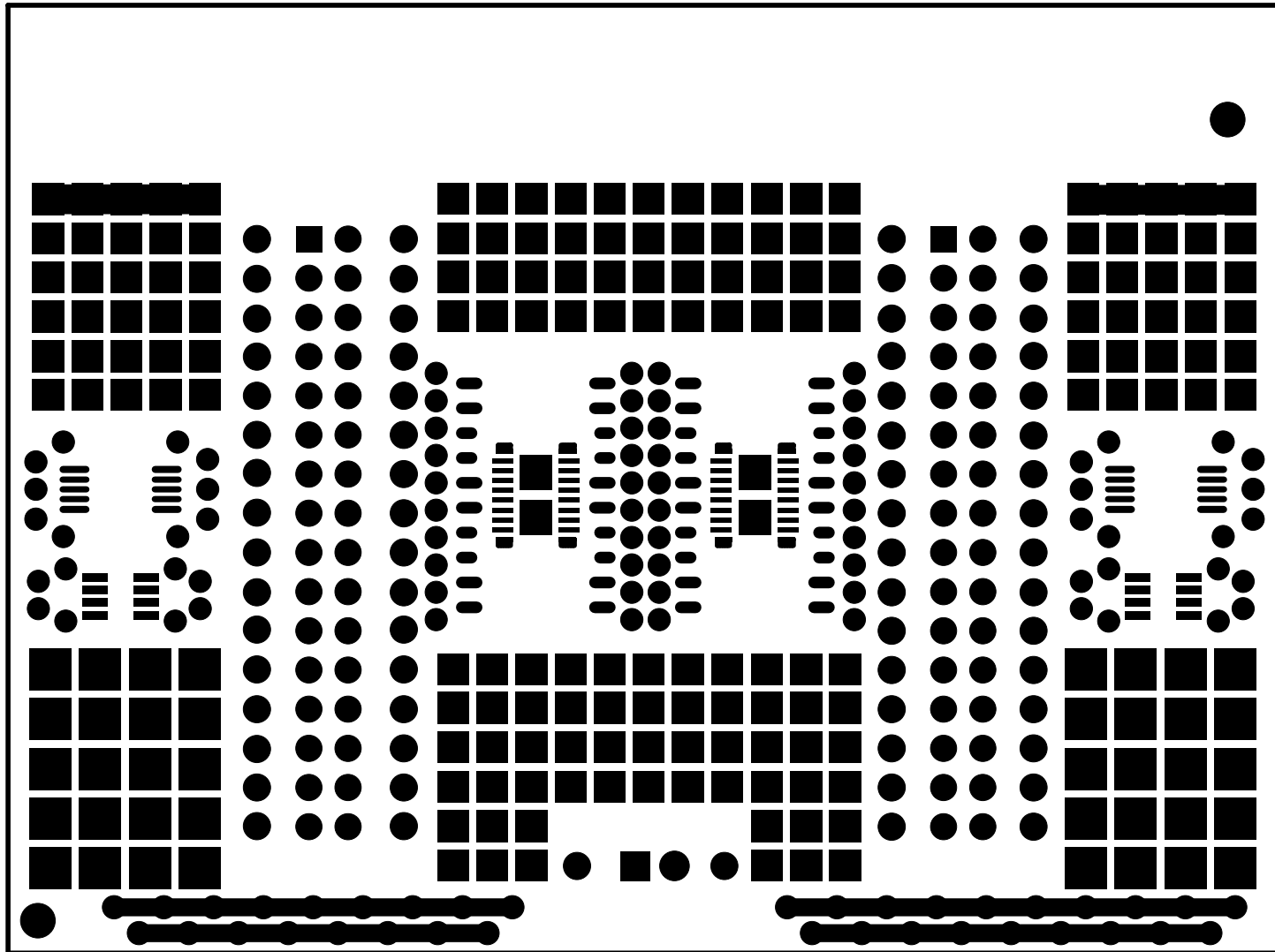
(408) 432-1900
www.linear.com



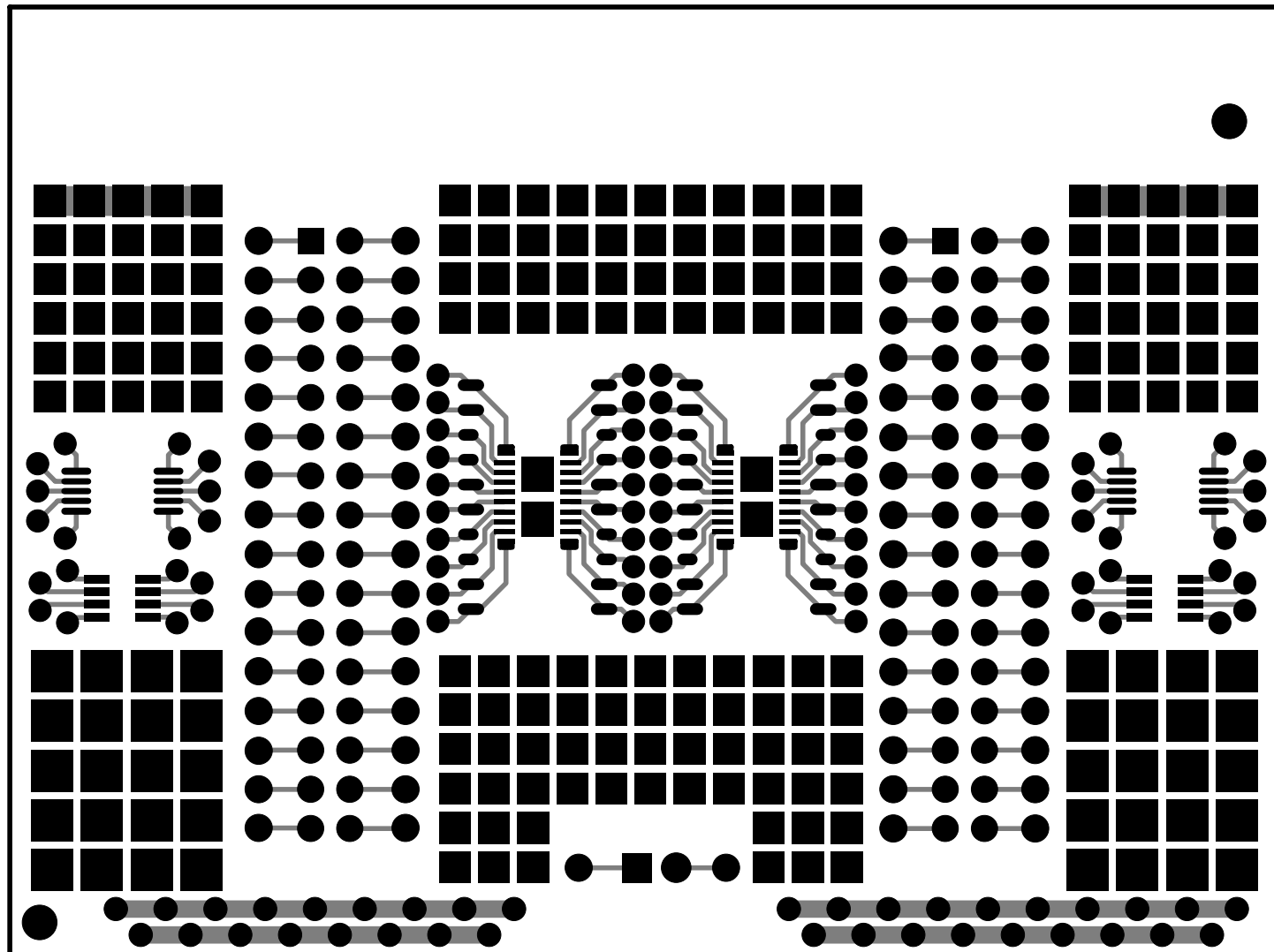
SILKSCREEN TOP
LINEAR TECH CORP.
DEMO CIRCUIT 2510A-1
SHIELD BOARD FOR USE WITH
DC2321A DUST DEMOBOARD
DATE: 12-15-15



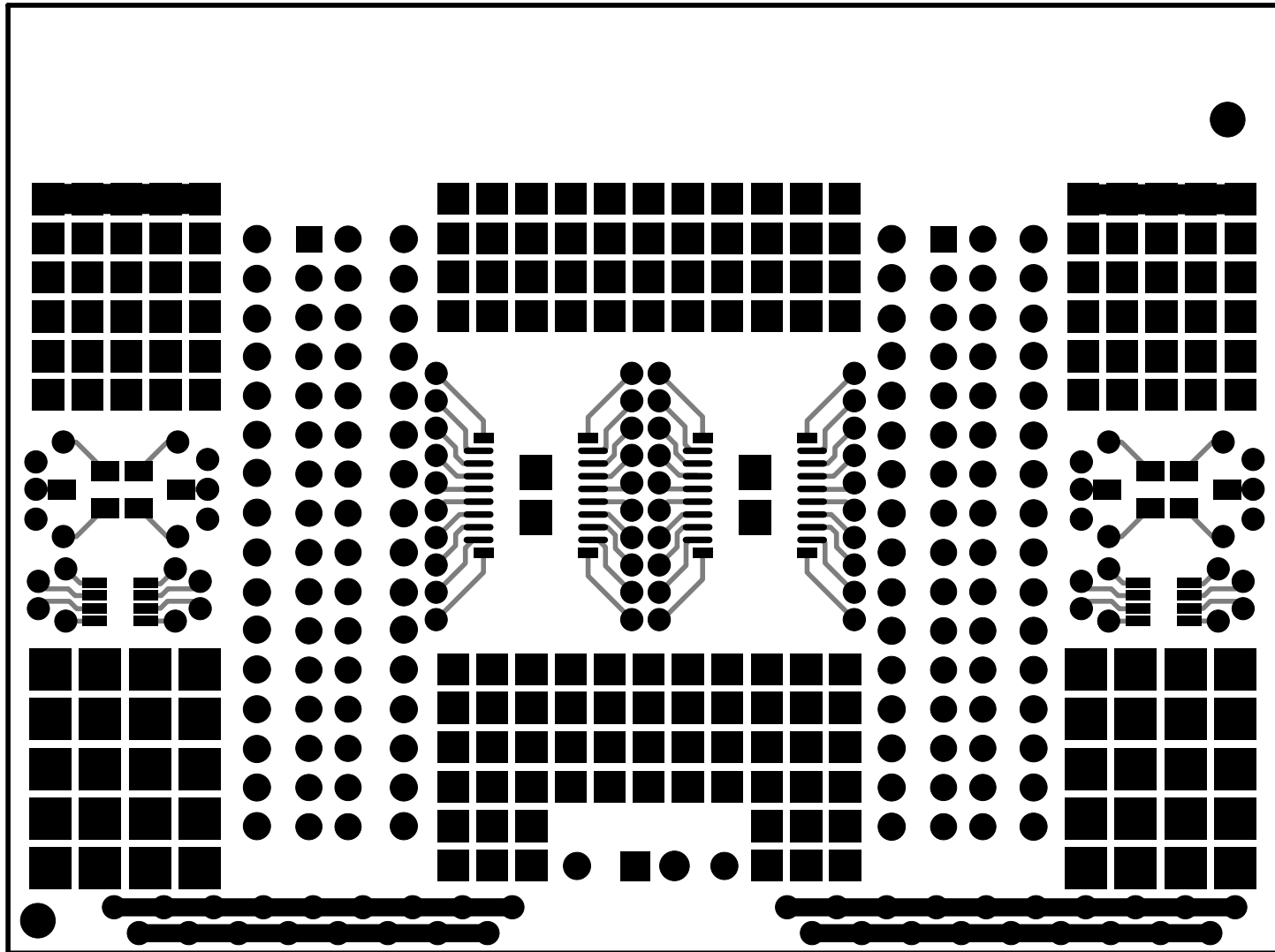
PASTEMASK TOP
LINEAR TECH CORP.
DEMO CIRCUIT 2510A-1
SHIELD BOARD FOR USE WITH
DC2321A DUST DEMOBOARD
DATE: 12-15-15



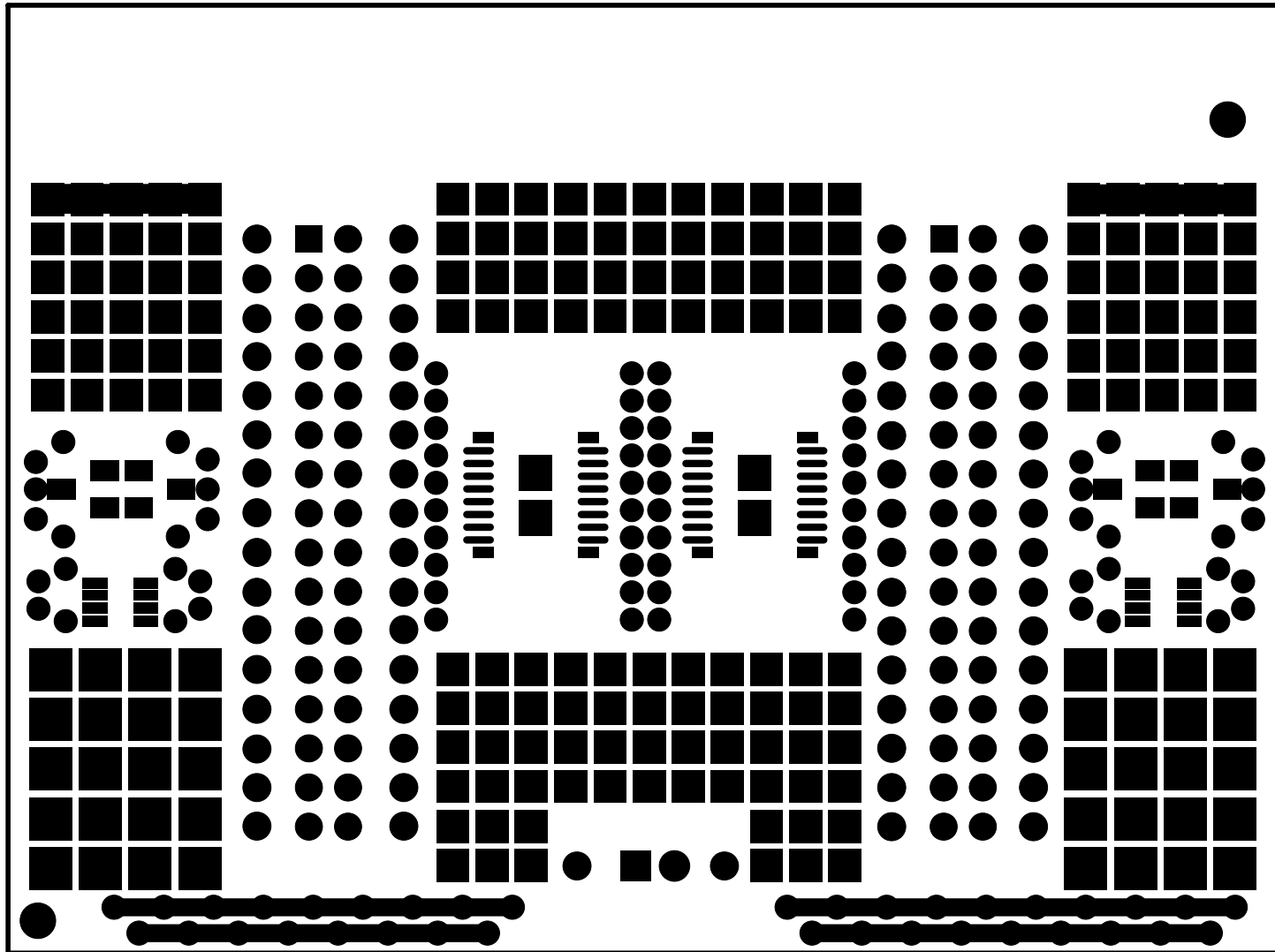
SOLDERMASK TOP
LINEAR TECH CORP.
DEMO CIRCUIT 2510A-1
SHIELD BOARD FOR USE WITH
DC2321A DUST DEMOBOARD
DATE: 12-15-15



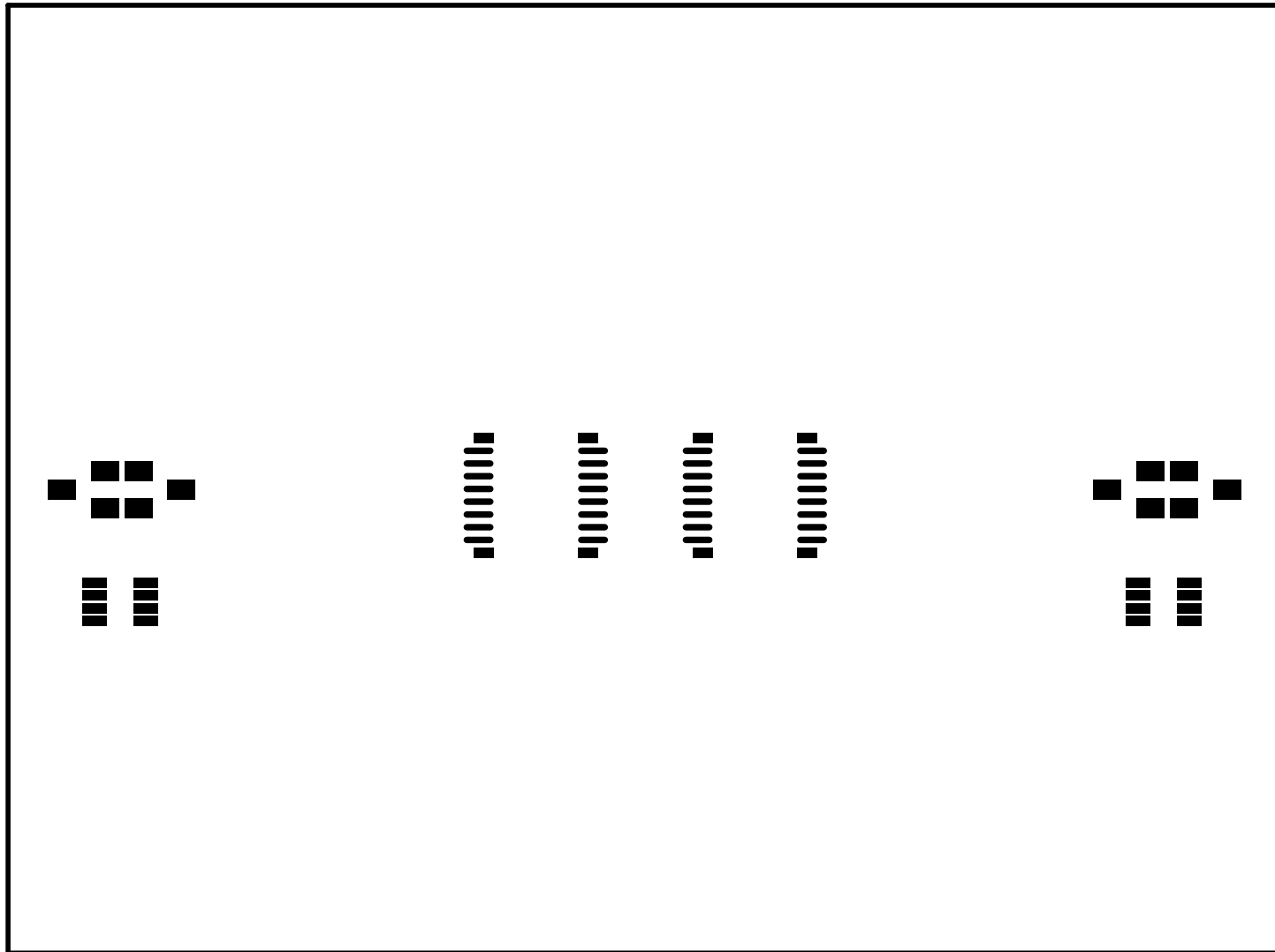
LAYER-1-TOP LAYER
LINEAR TECH CORP.
DEMO CIRCUIT 2510A-1
SHIELD BOARD FOR USE WITH
DC2321A DUST DEMOBOARD
DATE: 12-15-15



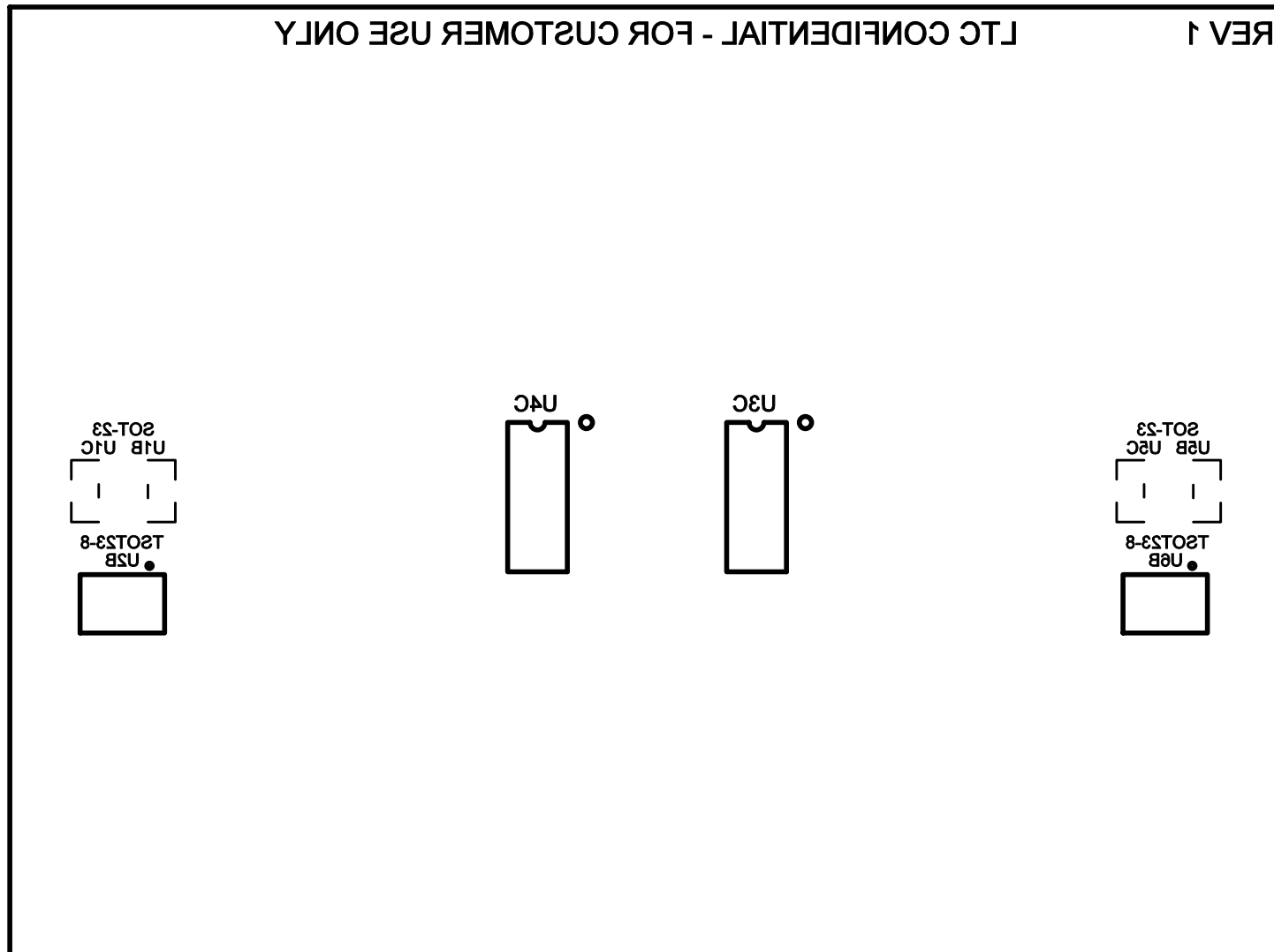
LAYER-2- BOTTOM LAYER
LINEAR TECH CORP.
DEMO CIRCUIT 2510A-1
SHIELD BOARD FOR USE WITH
DC2321A DUST DEMOBOARD
DATE: 12-15-15



SOLDERMASK BOTTOM
LINEAR TECH CORP.
DEMO CIRCUIT 2510A-1
SHIELD BOARD FOR USE WITH
DC2321A DUST DEMOBOARD
DATE: 12-15-15



PASTEMASK BOTTOM
LINEAR TECH CORP.
DEMO CIRCUIT 2510A-1
SHIELD BOARD FOR USE WITH
DC2321A DUST DEMOBOARD
DATE: 12-15-15



SILKSCREEN BOTTOM
 LINEAR TECH CORP.
 DEMO CIRCUIT 2510A-1
 SHIELD BOARD FOR USE WITH
 DC2321A DUST DEMOBOARD
 DATE: 12-15-15